

LAS Quick Reference

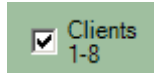
The screenshot shows the Laboratory Administration System (LAS) interface. It features a grid of PC status icons numbered 01 to 32, a central 'MASTER Buttons' panel, and a 'Shutdown' dropdown menu. A context menu for 'Internet Explorer' is also visible. Red callout boxes provide the following information:

- Master buttons:** Act on every PC that is selected
- Small buttons:** Acts only on that PC
- Blue status with a '2':** PC is running two programs
- Green status:** PC is idle / ready
- Yellow status:** Awaiting status check
- Blue status:** PC is running a program
- Group check box:** Quickly selects many PCs
- Program list:** The selected program will be started/stopped
- No status:** PC is off or hasn't been checked yet

The interface includes a menu bar with 'File', 'Options', and 'Help'. The 'MASTER Buttons' panel contains: 'Wake up' (green), 'Run prog' (blue), 'Shut down' (grey), 'Stop prog' (red), and 'Check STATUS' (yellow). The 'Shutdown' dropdown menu lists: 'Mute Audio', 'Unmute Audio', 'Set Volume 100%', 'Set Volume 90%', 'Set Volume 50%', and 'Sound Test'. The 'Internet Explorer' context menu is open, showing options like 'Mute Audio', 'Unmute Audio', and 'Set Volume 100%'.

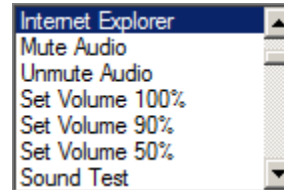
Walkthrough for controlling a simple experiment running one application on all lab PCs:


- Select all clients by checking the four group buttons.



- Press the master  button to power on all of the PCs if they are off. Otherwise press 

- Once all PCs show green status , select your program from the list.



- Press the master  button.

Here, the program should start on all PCs, and all of the status bars turn blue



Once the experiment is over...

- Press the master  button to close the program on all of the PCs.

All of the status bars should return to green. From here you could run another program, or press the master



button to power off all of the PCs.

Tips:

- When using the “Wake up” button, you may need to press it a few times for all of the PCs to respond.
- You can never press the “Check STATUS” button enough.
- If you’re running more than one program at a time, just be careful about what program is selected in the list when you’re pressing run or stop.